

**ALLDAY  
& MILLER**



Bedwell Gardens, Hayes, UB3 4EB  
£548,000

 3  2  1  D



## Bedwell Gardens, Hayes, UB3 4EB

**£548,000**

- Three Double Bedroom Semi
- Walking Distance to Hayes & Harlington Station
- Off Street Parking for Multiple Vehicles
- Great School Catchment Areas
- Large Garden
- Sleek Modern Kitchen & Bathroom
- Excellently Presented Throughout
- Outhouse To Rear Of Garden With Back / Side Access
- Potential to Extend
- Two Stylish Bathrooms

## Description

The property on offer comprises of an entrance porch, open plan reception room flowing into the sleek fitted kitchen which opens onto the rear garden. Completing the ground floor with a double bedroom and en suite.

To the first floor with two well appointed bedrooms and a family bathroom.

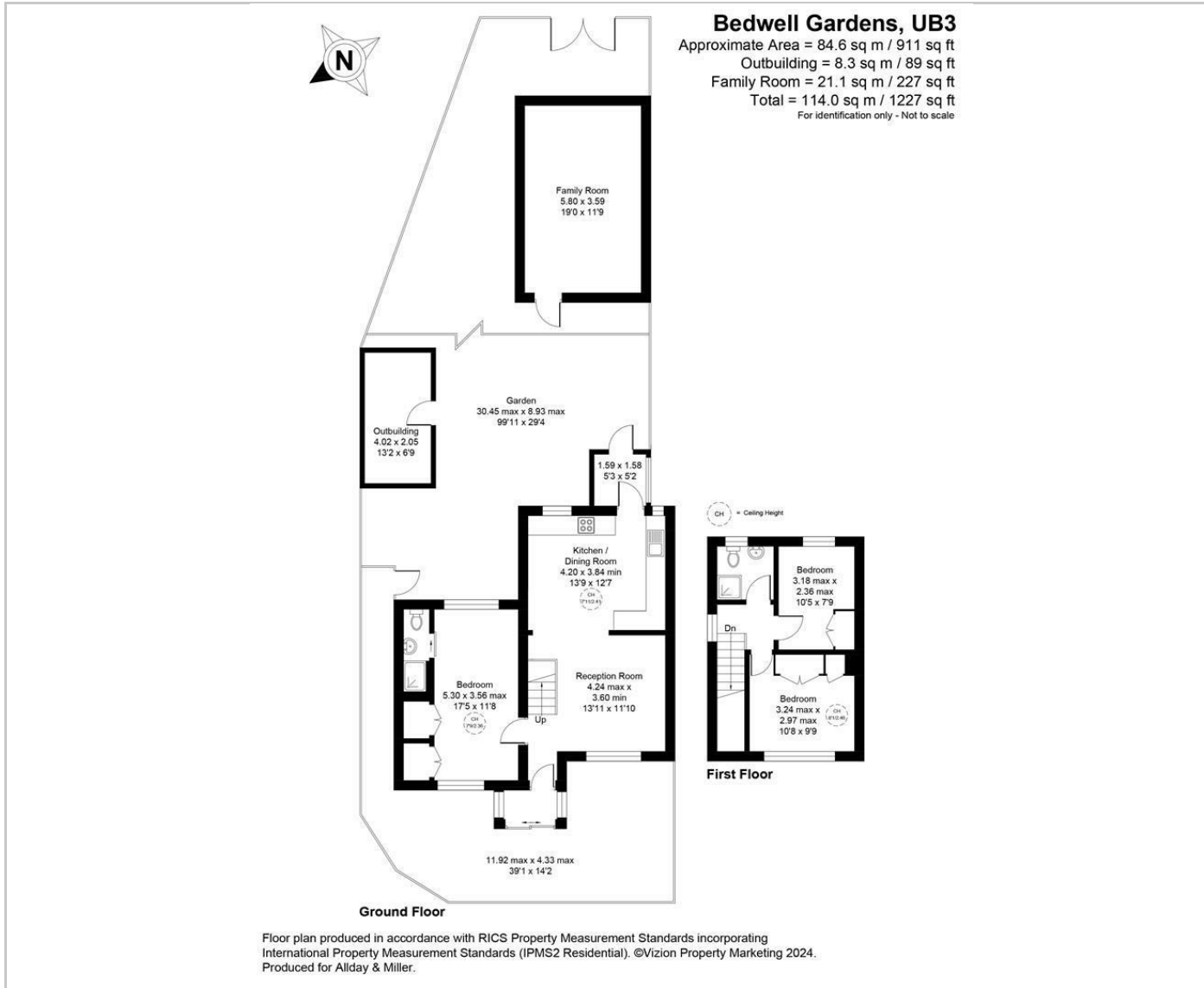
The front of the property benefiting from off road parking for multiple vehicles. A private rear garden with an outbuilding and family room perfect for extra storage space.

## Situation

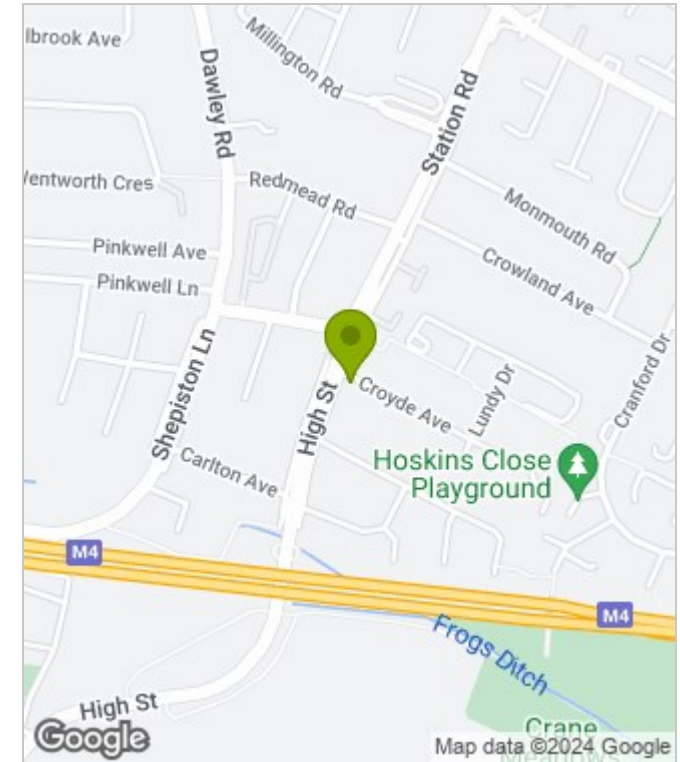
Bedwell Gardens a popular residential road conveniently located giving access with close proximity to local shops, bus links, numerous high regarded schools, Heathrow Airport, Stockley Park and the M4 with its links to London. Hayes Town is a short distance away providing a more extensive range of shops and restaurants along with Hayes and Harlington station with the Elizabeth Line.



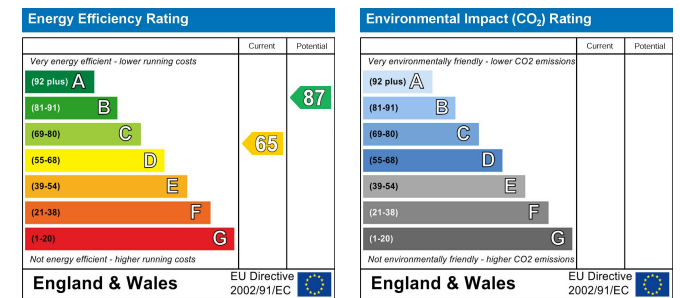
## Floor Plans



## Area Map



## Energy Performance Graph



These particulars, whilst believed to be accurate are set out as a general outline only for guidance and do not constitute any part of an offer or contract. Intending purchasers should not rely on them as statements of representation of fact, but must satisfy themselves by inspection or otherwise as to their accuracy. No person in this firm's employment has the authority to make or give any representation or warranty in respect of the property.